

TYPE 1;

Timber Frame Spandrel Panel for Masonry Wall (Single skin Fergacell)

PANEL

TIMBER FRAME

BOARD

FERMACELL

STRUCTURE

MASONRY PARTY WALL

Document Ref
Fergacell Spandrel Panels
Manufactured in accordance with
fermacell Spandrel Panel
fermacell Single Skin Solutions Document Jan 2018

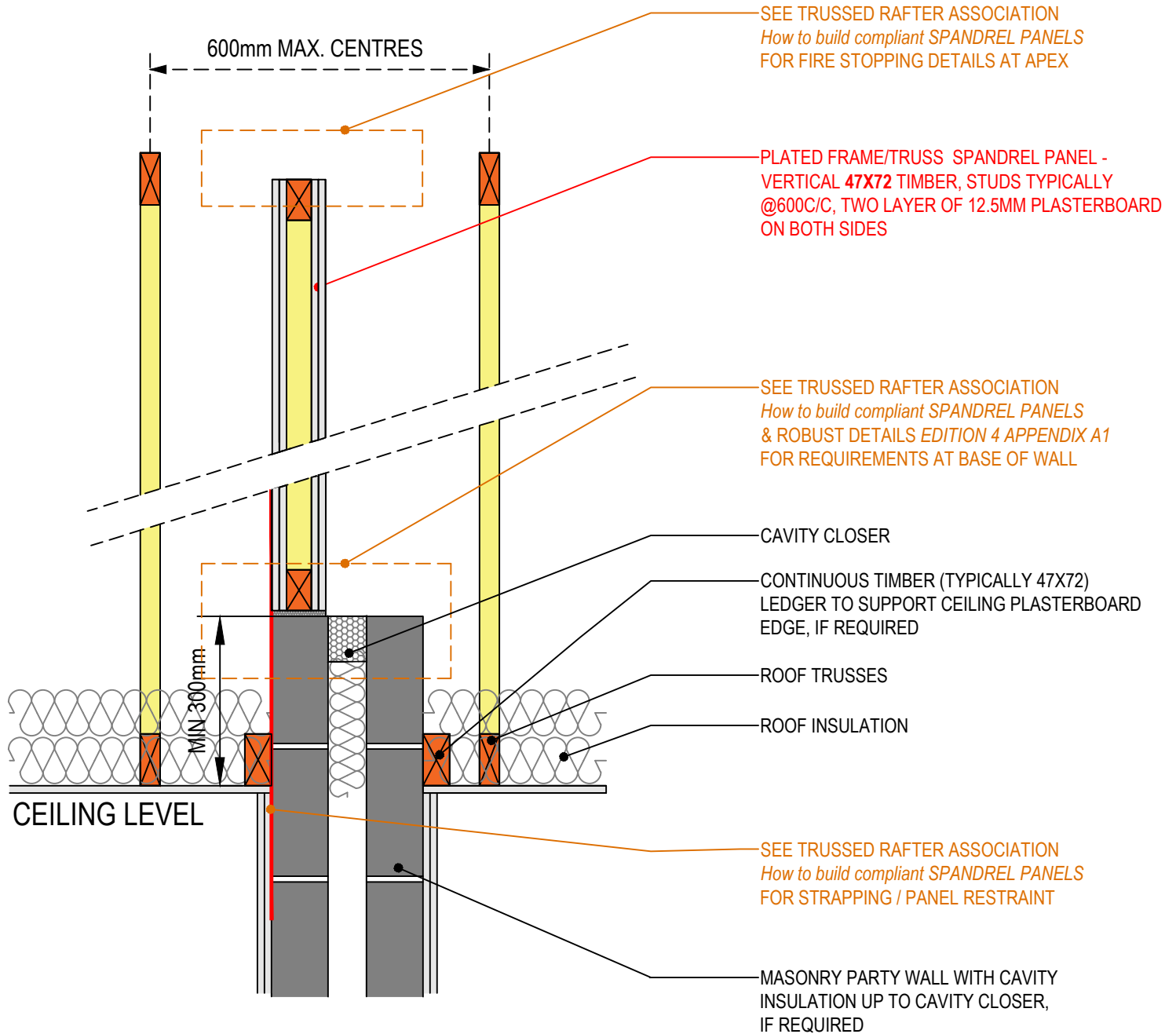
TRUSSED RAFTER ASSOCIATION
How to build compliant SPANDREL PANELS
Document V3 April 2018

ROBUST DETAILS
Edition 4 September 2018 Update

This is generic guidance information designed for use by persons within the industry who understand the business they work in. While this document has been prepared in good faith and all reasonable efforts have been made to ensure its adequacy and accuracy, no representation, warranty, assurances or undertaking (express or implied) is or will be made

TO BE READ IN CONJUNCTION WITH

EDITION 1 / DECEMBER 2018

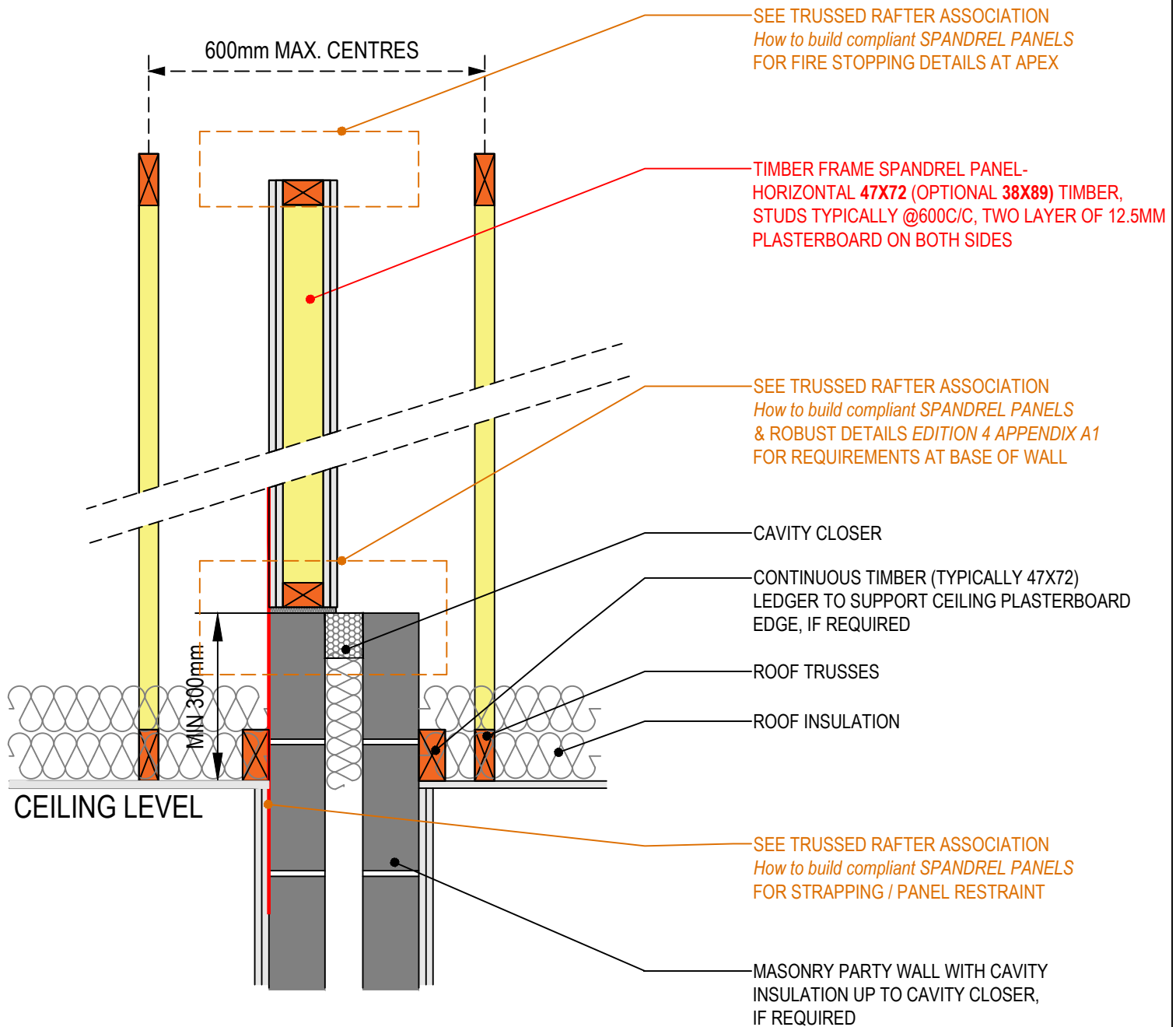


TYPE 2;	<i>Plated Spandrel Panel for Masonry Wall (Two layers of Plasterboard)</i>
WALL	PLATED FRAME TRUSS
BOARD	PLASTERBOARD
STRUCTURE	MASONRY PARTY WALL

Document Ref	TRUSSED RAFTER ASSOCIATION <i>How to build compliant SPANDREL PANELS</i> Document V3 April 2018
	ROBUST DETAILS <i>Edition 4 September 2018 Update</i>

This is generic guidance information designed for use by persons within the industry who understand the business they work in. While this document has been prepared in good faith and all reasonable efforts have been made to ensure its adequacy and accuracy, no representation, warranty, assurances or undertaking (express or implied) is or will be made

TO BE READ IN CONJUNCTION WITH EDITION 1 / DECEMBER 2018



TYPE 3; *Timber Frame Spandrel Panel
for Masonry Wall (Two layers of Plasterboard)*

WALL *TIMBER FRAME*

BOARD *PLASTERBOARD*

STRUCTURE *MASONRY PARTY WALL*

Document Ref
Fermacell Spandrel Panels
Manufactured in accordance with
fermacell Spandrel Panel
fermacell Single Skin Solutions Document Jan 2018

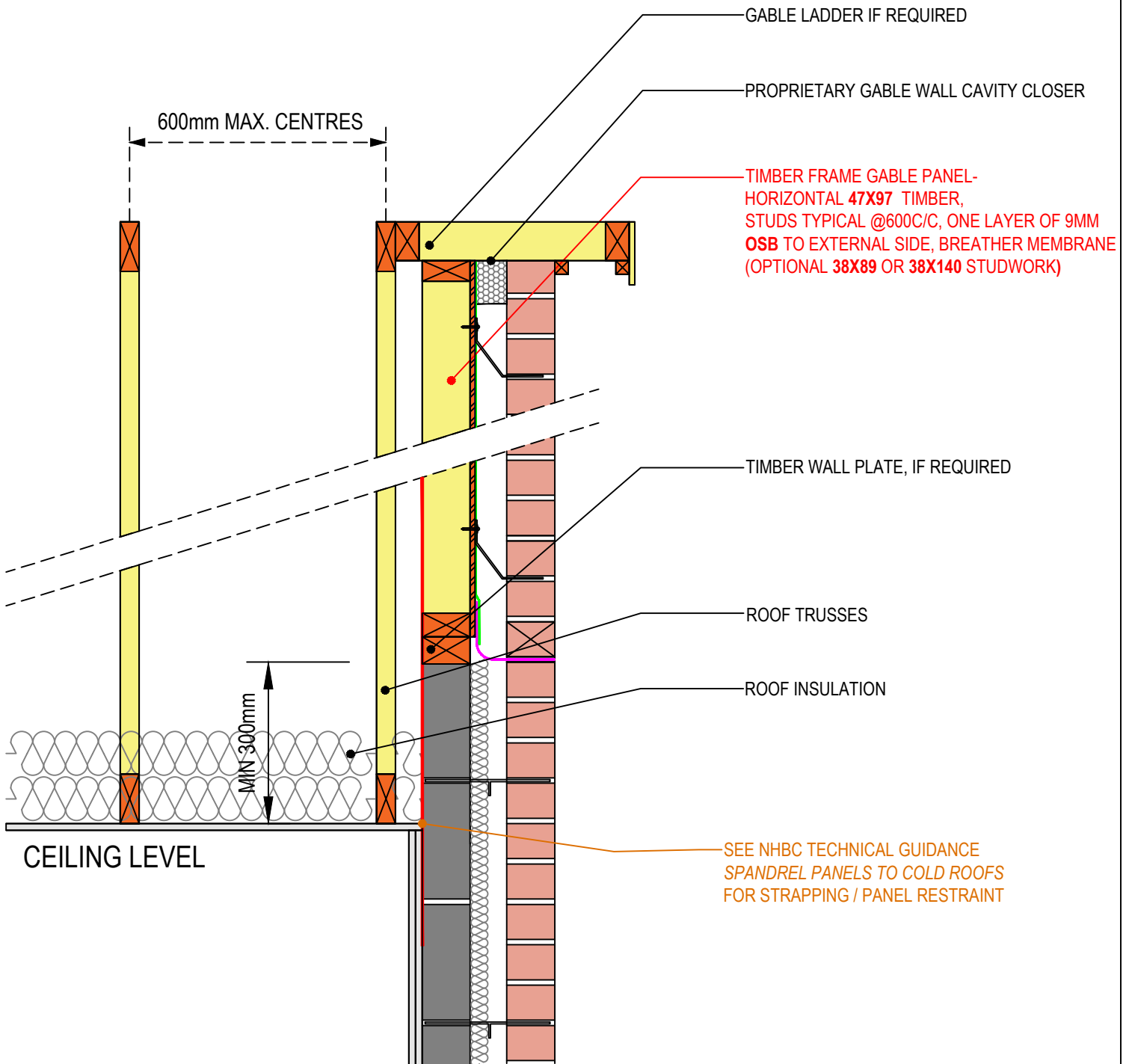
TRUSSED RAFTER ASSOCIATION
How to build compliant SPANDREL PANELS
Document V3 April 2018

ROBUST DETAILS
Edition 4 September 2018 Update

This is generic guidance information designed for use by persons within the industry who understand the business they work in. While this document has been prepared in good faith and all reasonable efforts have been made to ensure its adequacy and accuracy, no representation, warranty, assurances or undertaking (express or implied) is or will be made

TO BE READ IN CONJUNCTION WITH

EDITION 1 / DECEMBER 2018



TYPE 4; *Gable Panel for Masonry Wall*

PANEL *TIMBER FRAME*

BOARD *9MM OSB*

STRUCTURE *MASONRY GABLE WALL*

Gable Panels manufactured in accordance with project specific engineering and NHBC TECHNICAL GUIDANCE SPANDREL PANELS TO COLD ROOFS 7.2/25 Jan2018 (First Issue)

This is generic guidance information designed for use by persons within the industry who understand the business they work in. While this document has been prepared in good faith and all reasonable efforts have been made to ensure its adequacy and accuracy, no representation, warranty, assurances or undertaking (express or implied) is or will be made

TO BE READ IN CONJUNCTION WITH

EDITION 1 / DECEMBER 2018